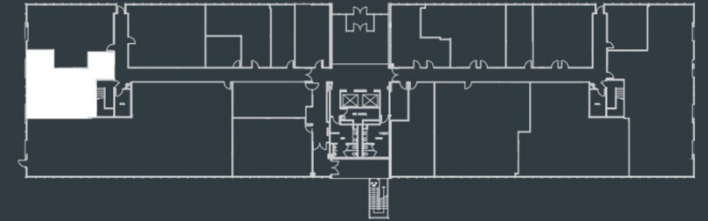
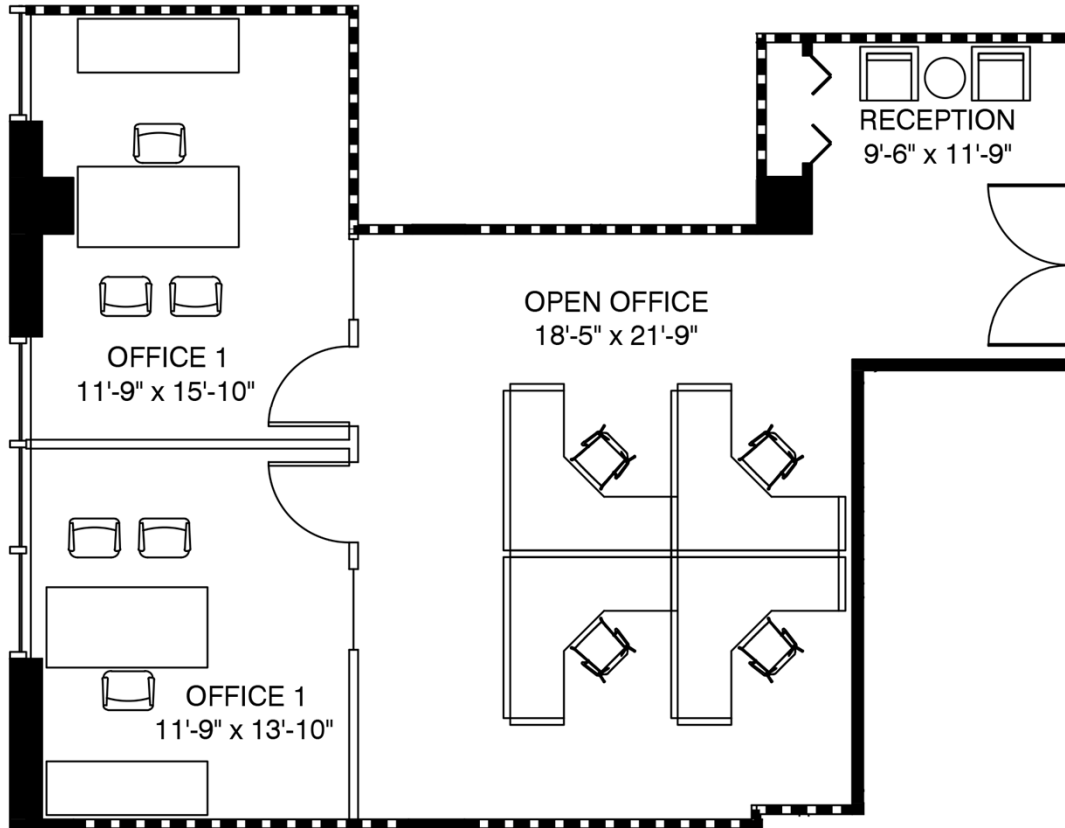


SUITE 171 | 1,034 RSF

# MEADOW CENTRAL

10300 Central Expressway, Dallas, TX 75231



FOR LEASING INFORMATION

Eric Dell

972.942.8601

[edell@dogwoodcommercial.com](mailto:edell@dogwoodcommercial.com)

Austin Busse

972.354.8084

[abusse@dogwoodcommercial.com](mailto:abusse@dogwoodcommercial.com)



**DOGWOOD**  
COMMERCIAL

This document has been prepared solely for advertising and general information. This information has been obtained from the Owner/Landlord and/or other general publicly available sources deemed to be reasonably credible. Dogwood Commercial and its agents have not verified any of the information and make no guarantees, representations or warranties, expressed or implied, regarding the information including, but not limited to any warranties of suitability, accuracy, habitability, completeness, content or reliability. It is your duty and responsibility to independently conduct, and/or have experienced third parties conduct, an independent investigation of the property to determine to your sole satisfaction the suitability, habitability, and acceptability of the property for your specific need and use, its fitness for a particular purpose, its compliance with all applicable laws and confirm the absence or existence of any hazardous materials. The information provided is subject to change and no liability for errors and omissions is assumed or permitted.