



4741 IBERIA AVENUE

Dallas, Texas 75207

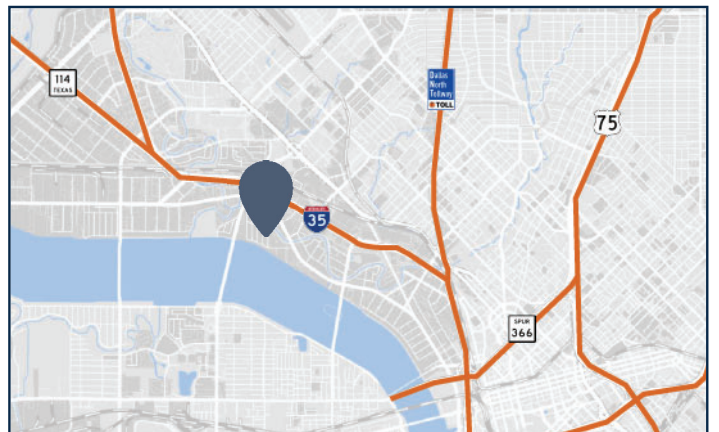


PROJECT FACTS

- >> 9,600 SF Building
- >> Recently Renovated
- >> 100% HVAC
- >> Dock High Door
- >> Convenient Access to I-35, I-30, Hwy 183 and Irving Boulevard

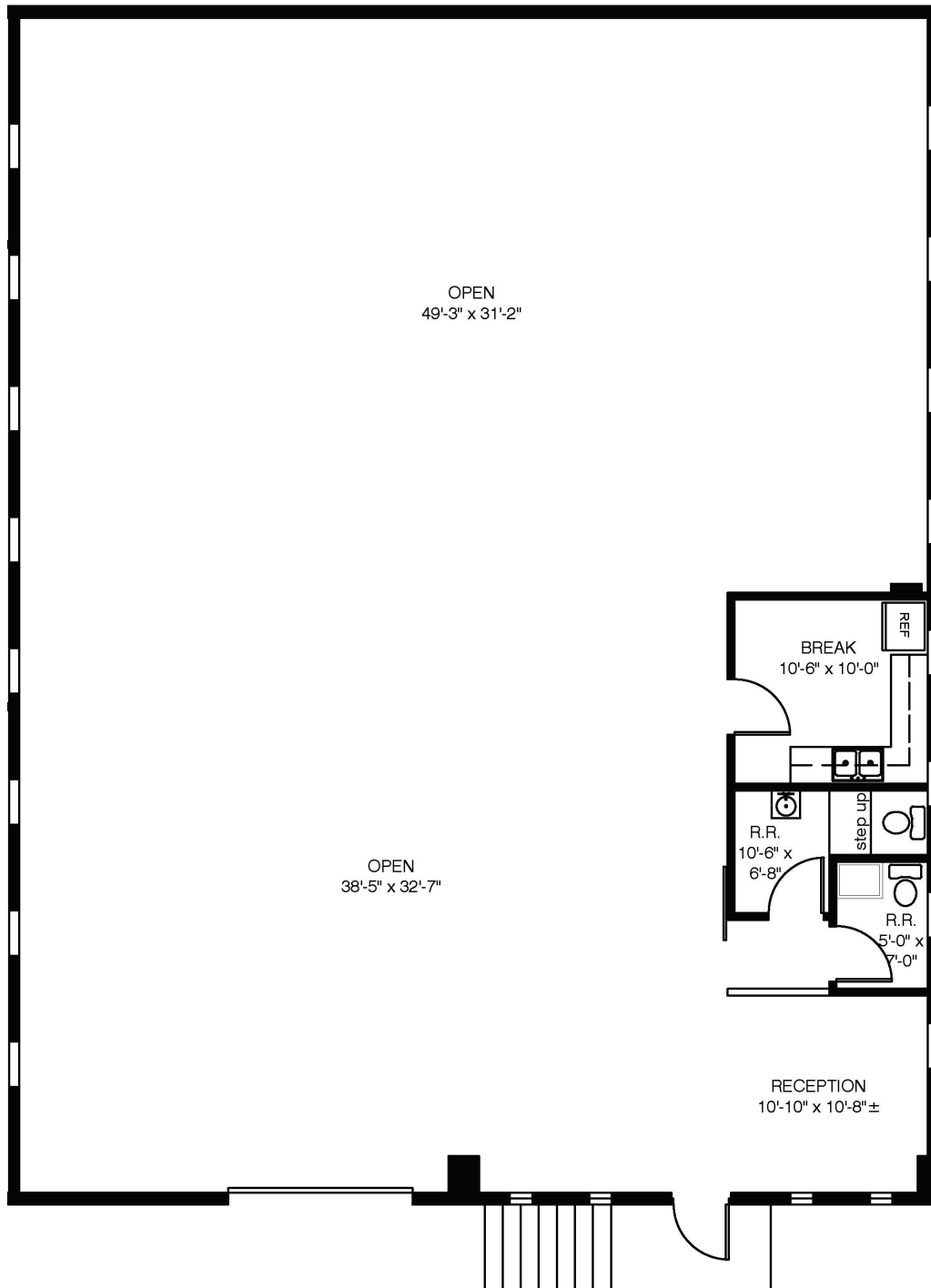
CONTACT FOR INFORMATION

- >> Austin Busse
972.354.8084
abusse@dogwoodcommercial.com
- >> Eric Dell
972.942.8601
edell@dogwoodcommercial.com



SUITE B - 3,244 RSF

4741 Iberia Avenue, Dallas, Texas 75207



DOGWOOD
COMMERCIAL

Austin Busse
abusse@dogwoodcommercial.com
972.354.8084

Eric Dell
edell@dogwoodcommercial.com
972.942.8601