



4853 VICKBURG STREET

Dallas, Texas 75207



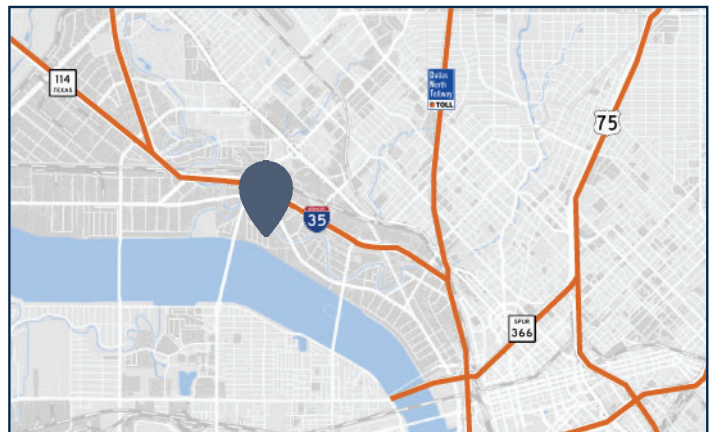
PROJECT FACTS

- >> 3,100 RSF Building
- >> 100% HVAC
- >> 11 Surface Parking Spaces
- >> Convenient Access to I-35, I-30, Hwy 183 and Irving Boulevard
- >> Renovations of Project Underway



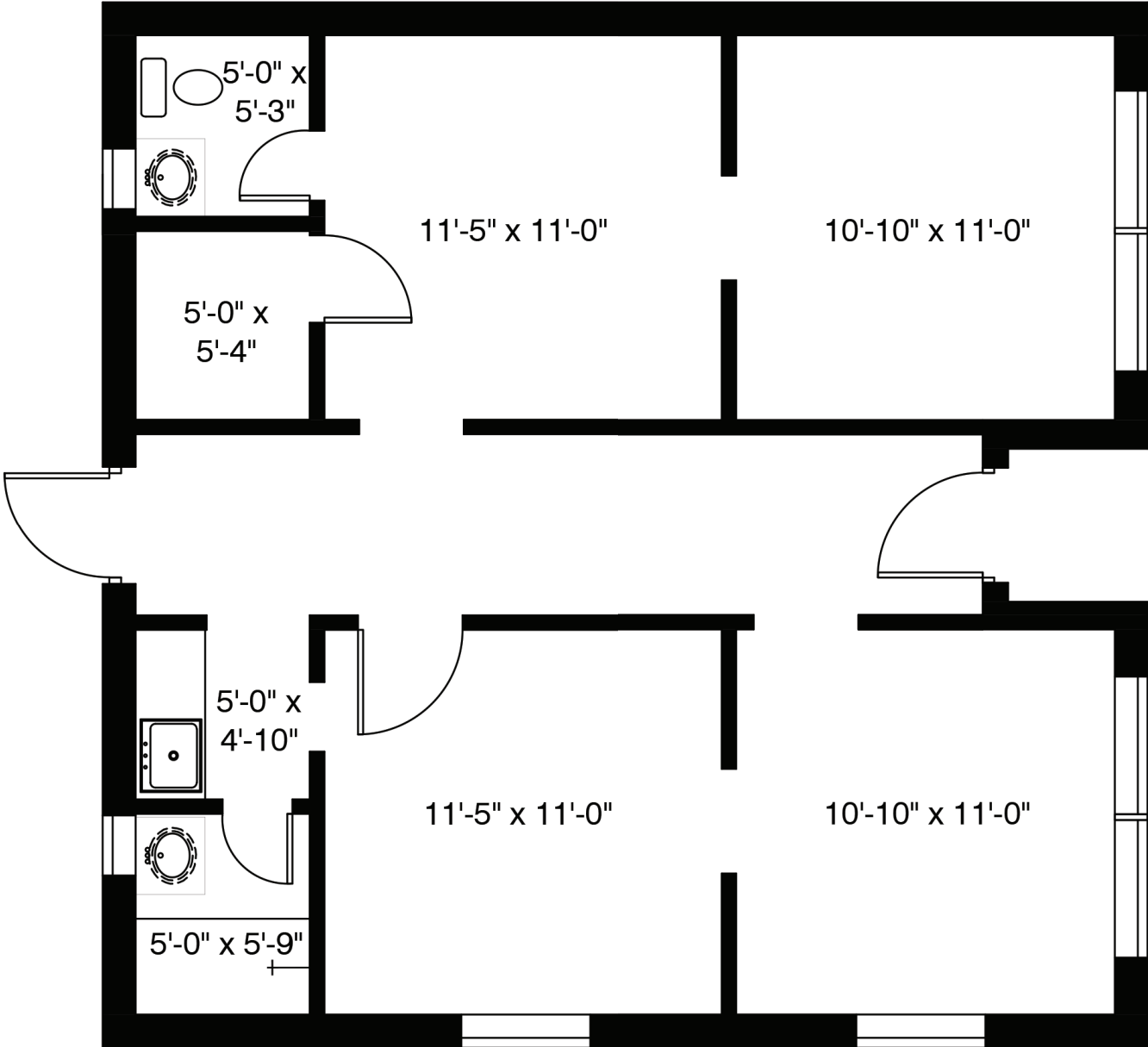
CONTACT FOR INFORMATION

- >> Austin Busse
972.354.8084
abusse@dogwoodcommercial.com
- >> Eric Dell
972.942.8601
edell@dogwoodcommercial.com



SUITE 100 - 900 RSF

4853 Vicksburg Street, Dallas, Texas 75207



DOGWOOD
COMMERCIAL

Austin Busse
abusse@dogwoodcommercial.com
972.354.8084

Eric Dell
edell@dogwoodcommercial.com
972.942.8601