



DOGWOOD

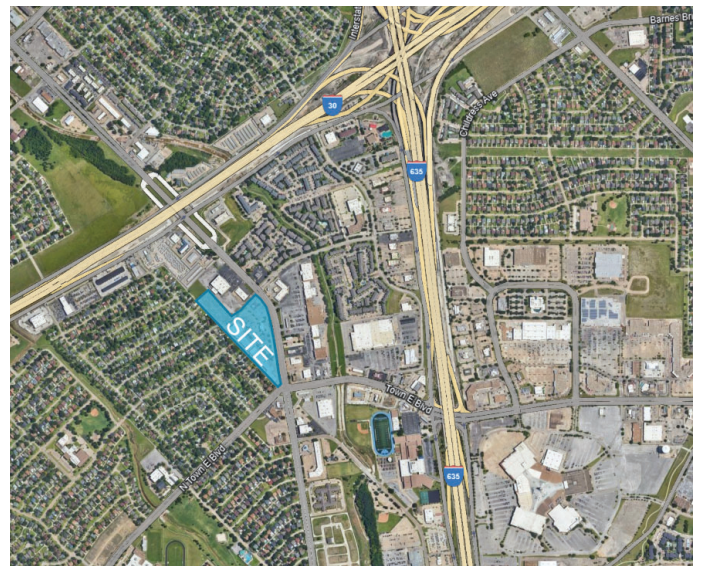
DRIFTWOOD VILLAGE

NWC of Town East Blvd & Gus Thommasson Rd, Mesquite, TX 75150



PROJECT FACTS

- >> Project Size: 82,941 RSF Total
- >> Up to 2,800 SF Retail/Office/Restaurant Space Available
- >> +/- 1.79 Acre Pad Site Available
- >> Recently Renovated Property in the Heart of Mesquite
- >> Easy Access to I-30, I-635, and Hwy 80
- >> Shopping Center has Excellent Visibility and Signage



Scott Eiting

seiting@dogwoodcommercial.com

972.942.8605

dogwoodcommercial.com

DRIFTWOOD VILLAGE

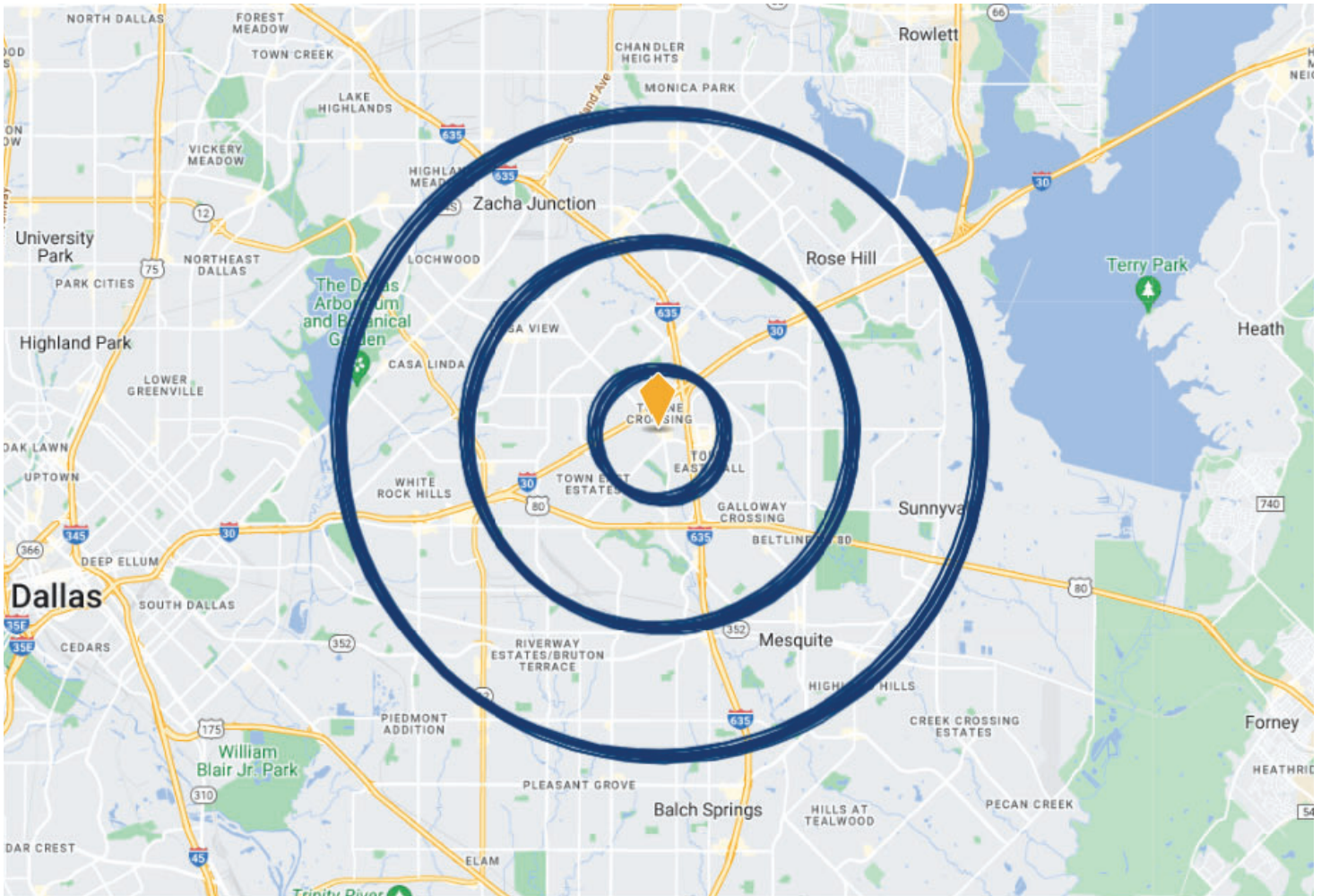
NWC of Town East Blvd & Gus Thommasson Rd, Mesquite, TX 75150

DEMOGRAPHICS

	1 MILE	3 MILE	5 MILE
2023 Population	13,197	124,614	312,580
Avg. HH Income	\$65,559	\$64,179	\$72,404
Median Age	33.4	33.6	34.1

TRAFFIC COUNTS

	VPD
Gus Thommasson	25,725
Driftwood	5,005
N Town East Blvd (TXDOT, 2022)	24,500





DRIFTWOOD VILLAGE

NWC of Town East Blvd & Gus Thommasson Rd, Mesquite, TX 75150



TENANT LIST

Suite 105 - 107	Smiley Dental
Suite 102	Speedy Cash
Suite 5	Firestone
Suite 15	Yen Nails
Suite 25	Family Financial Group
Suite 35	US Post Office
Suite 39	Shipping Company
Suite 43 - 47	Town East Washateria
Suite 51	Lone Star Comic
Suite 63	Once Upon a Child
Suite 75	DFW Injury Clinic
Suite 3653	ALDI
PAD A	LoanStar Title Loans
PAD B	Chase Bank

AVAILABILITIES

Suite 103	1,381 SF
Suite 11	2,800 SF
Suite 17	1,300 SF
PAD C	+/- 1.79 ACRES

CONTACTS

- >> Scott Eiting
Listing Agent
972.942.8605
seiting@dogwoodcommercial.com
- >> Zakiya Everett
Property Manager
972.330.8381
zeverett@dogwoodcommercial.com