

Windsor Park Place Retail Center

4930 Windsor Hills Drive
Windcrest, TX 78239



DOGWOOD
COMMERCIAL



Windsor Park Place is a strategically located neighborhood retail center totaling 66,300 SF in Windcrest, TX, positioned at an intersection with strong frontage and visibility along Walzem Road and North Pan Am Expressway with excellent access to Loop 410 & I35. The center offers abundant parking and exposure to high traffic counts, with a curated mix of retail and service-oriented users and prominent signage opportunities to drive consumer awareness.

Demographics (map on next page)

	1 Mile	3 Miles	5 Miles
2025 Population	8,995	105,447	288,959
Households	3,428	40,824	108,292
Average HH Income	\$81,202	\$78,908	\$91,083

Available Spaces (site map on next page)

- Unit 4942** - 2,100 SF
- Unit 4951-1** - 2,000 SF
- Unit 4957** - 5,883 SF

Traffic Counts (2025)

- Walzem Rd:** 39,089 VPD
- Windsor Hill:** 4,112 VPD



LEASING

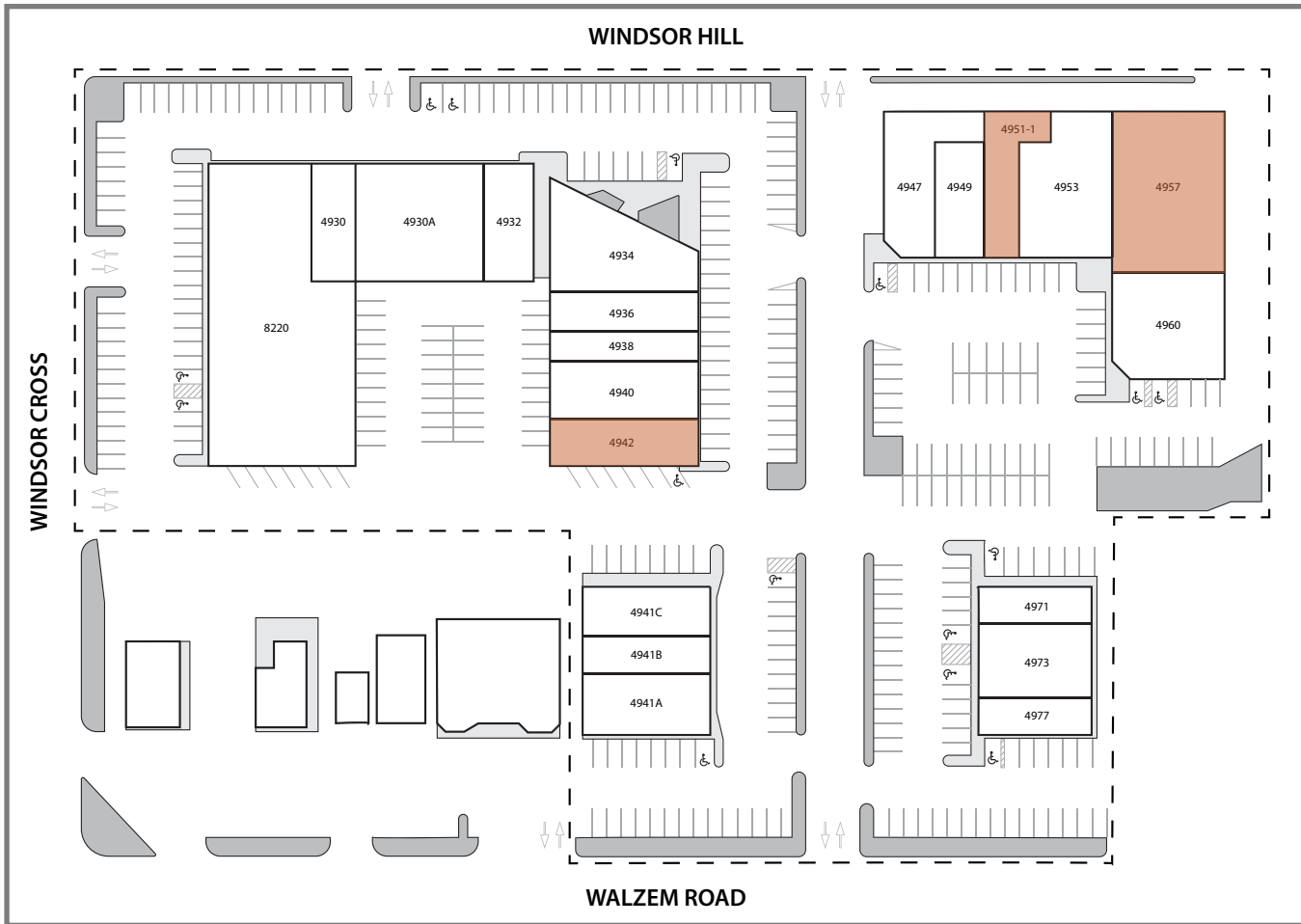
Scott Eiting
214.244.4183
seiting@dogwoodcommercial.com

Jake Carr
210.860.2546
jcarr@dogwoodcommercial.com

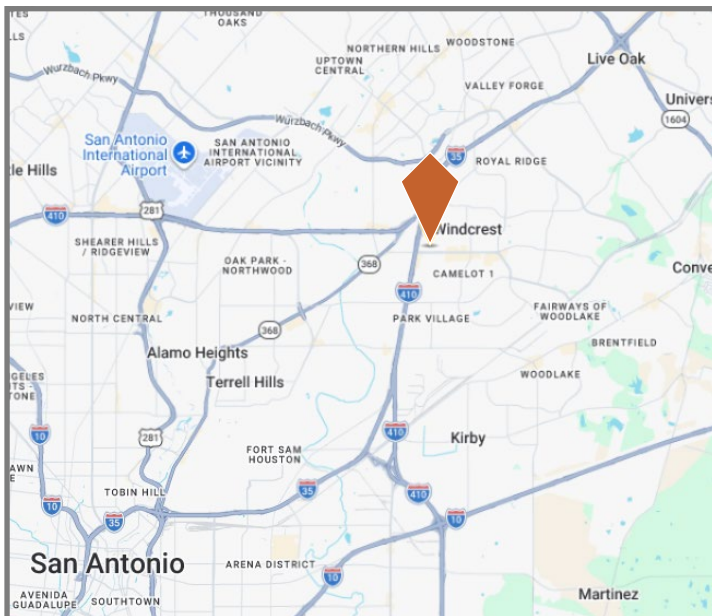


dogwoodcommercial.com

Property Site Map & Availability



Property Location



Tenant List

- | | |
|-------------------------------------|----------------------------------|
| Unit 8220 - Premier High School | Unit 4942 - Vacant |
| Unit 4930 - AL & Cargo | Unit 4947 - H&R Block |
| Unit 4930-A- WNS Nail Supply | Unit 4949 - Gonzales Insurance |
| Unit 4932 - Garanzuay Dentistry | Unit 4951-1 - Vacant |
| Unit 4934 - Pho Hai An | Unit 4953 - Lacuna Autism Clinic |
| Unit 4936 - Kady African Braiding | Unit 4957 - Vacant |
| Unit 4938 - El Genio Pizzeria | Unit 4960 - Gabrielle Thompson |
| Unit 4940 - Jonathan Miranda | Unit 4971 - Cricket Wireless |
| Unit 4941-A - TitleMax | Unit 4973 - Melendez Mexican |
| Unit 4941-B - Fishland Fish Market | Unit 4977 - Subway |
| Unit 4941-C - Vietnamese Restaurant | |

LEASING

Scott Eiting
214.244.4183
seiting@dogwoodcommercial.com

Jake Carr
210.860.2546
jcarr@dogwoodcommercial.com

