

CENTERVIEW CROSSING

4538 Centerview Dr. San Antonio, TX 78228 (Centerview Building)



DOGWOOD
COMMERCIAL



1. Centerview Building - 38,258 SF
2. Sabine Building - 49,334 SF
3. Royal Building - 25,257 SF
4. Austin Building - 32,363 SF
5. Lamar Building - 30,830 SF
6. Brazos Building - 49,376 SF
7. Burnet Building - 14,968 SF

Property Information

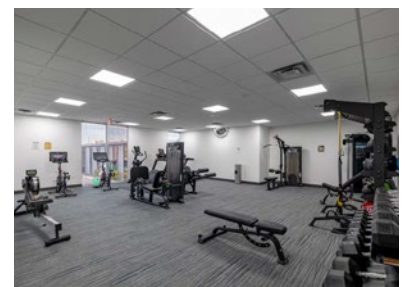
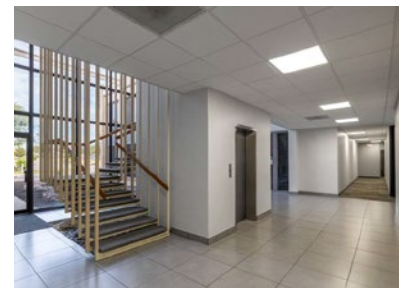
- + Seven-building office campus
- + 240,386 Total RSF
- + Built in 1985
- + Newly renovated lobbies, common areas, and restrooms
- + Immediate access to Loop 410

Leasing Overview

- + Availability Suites from 500 - 3,000 SF
- + Rent Starting as low as \$19.00/SF Full-service

Amenities

- + Building Conference Center with Wi-Fi Connectivity to seat 50+ people
- + On-site Management Team & Engineer
- + Fitness Center with Locker Rooms & Showers
- + Move-in Ready Spec Suites
- + Nearby Restaurants & Retail
- + Convenient access to NW Loop 410, and offers an easy commute with Interstate 10 and Bandera Rd
- + Close proximity to Methodist Hospital



Leasing

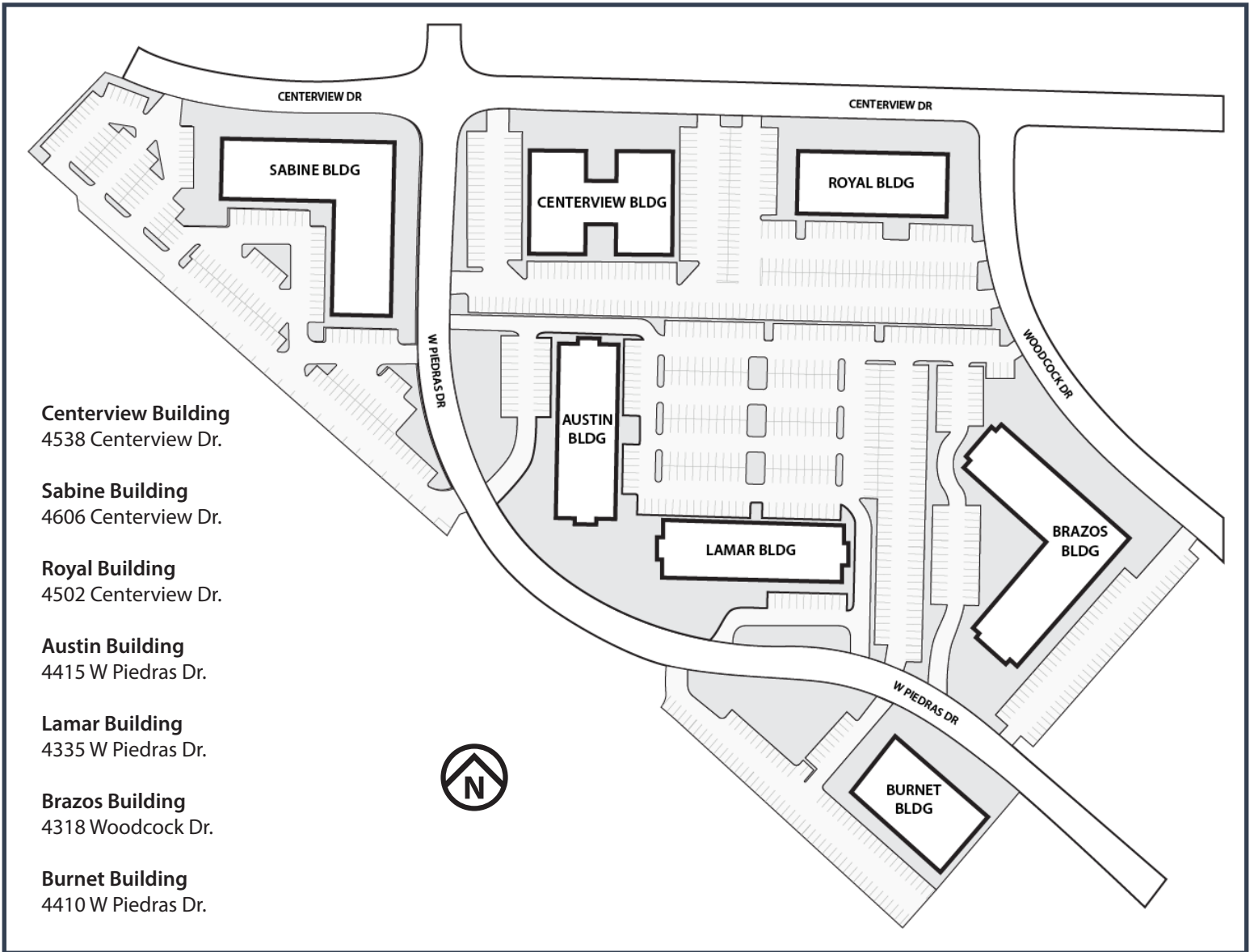
Jake Carr

210.860.2546

jcarr@dogwoodcommercial.com



dogwoodcommercial.com



Available Suites

Centerview Building

Suite 154 - 373 SF
Suite 158 - 401 SF
Suite 200 - 20,777 SF

Sabine Building

Suite 180 - 505 SF
Suite 187 - 621 SF
Suite 221 - 2,503 SF
Suite 223 - 584 SF
Suite 264 - 479 SF
Suite 266 - 991 SF

Royal Building

Suite 111 - 363 SF
Suite 200 - 1,860 SF
Suite 231 - 398 SF
Site 233 - 1,719 SF

Austin Building

Suite 260 - 762 SF

Lamar Building

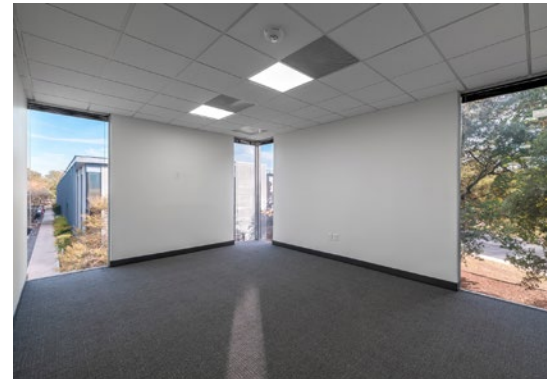
Suite 103 - 1,591 SF
Suite 215 - 1,313 SF

Brazos Building

Suite 100 - 5,950 SF
Suite 115 - 1,349 SF
Suite 200 - 24,972 SF

Burnet Building

Suite 100 - 14,968 SF



Leasing

Jake Carr

210.860.2546

jcarr@dogwoodcommercial.com

